

## MLS Area 3

## Residential Statistics



## September 2021

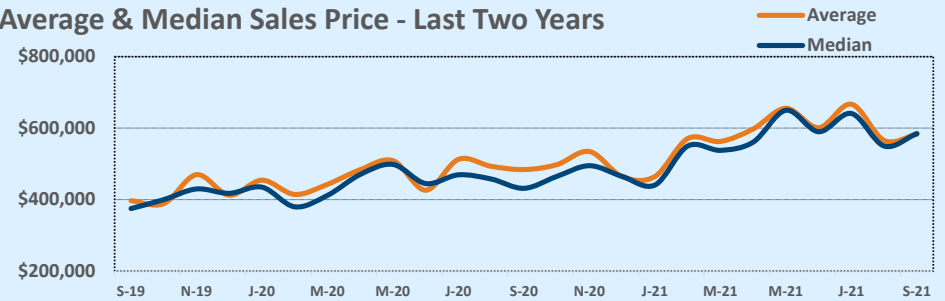
Listings	This Month			Year-to-Date		
	Sep 2021	Sep 2020	Change	2021	2020	Change
Single Family Sales	45	45	--	390	368	+6.0%
Condo/TH Sales	11	25	-56.0%	151	106	+42.5%
<b>Total Sales</b>	<b>56</b>	<b>70</b>	<b>-20.0%</b>	<b>541</b>	<b>474</b>	<b>+14.1%</b>
New Homes Only	2	5	-60.0%	68	46	+47.8%
Resale Only	54	65	-16.9%	473	428	+10.5%
Sales Volume	\$32,640,170	\$33,893,806	-3.7%	\$318,461,193	\$224,778,245	+41.7%
New Listings	84	64	+31.3%	694	579	+19.9%
Pending	36	53	-32.1%	87	500	-82.6%
Withdrawn	13	8	+62.5%	51	49	+4.1%
Expired	3	1	+200.0%	16	21	-23.8%
Months of Inventory	1.3	0.9	+47.2%	N/A	N/A	--

Price Range	This Month			Year-to-Date		
	New	Sales	DOM	New	Sales	DOM
\$149,999 or under	--	--	--	--	--	--
\$150,000- \$199,999	1	2	2	16	17	44
\$200,000- \$249,999	2	1	38	23	17	55
\$250,000- \$299,999	2	1	19	15	12	7
\$300,000- \$349,999	--	4	11	15	22	17
\$350,000- \$399,999	5	1	6	36	25	41
\$400,000- \$449,999	6	5	18	37	38	35
\$450,000- \$499,999	7	2	54	83	48	25
\$500,000- \$549,999	9	7	18	69	70	18
\$550,000- \$599,999	9	6	12	85	54	11
\$600,000- \$699,999	24	13	18	145	98	13
\$700,000- \$799,999	10	4	12	69	55	13
\$800,000- \$899,999	4	8	7	45	43	13
\$900,000- \$999,999	2	2	15	33	19	8
\$1M - \$1.99M	3	--	--	23	23	5
\$2M - \$2.99M	--	--	--	--	--	--
\$3M+	--	--	--	--	--	--
<b>Totals</b>	<b>84</b>	<b>56</b>	<b>16</b>	<b>694</b>	<b>541</b>	<b>19</b>

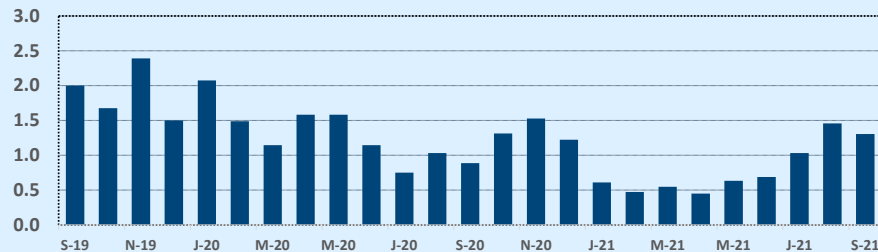
Average	This Month			Year-to-Date		
	Sep 2021	Sep 2020	Change	2021	2020	Change
List Price	\$579,916	\$482,191	+20.3%	\$559,267	\$473,769	+18.0%
List Price/SqFt	\$370	\$328	+12.6%	\$361	\$306	+18.2%
Sold Price	\$582,860	\$484,197	+20.4%	\$588,653	\$474,216	+24.1%
Sold Price/SqFt	\$370	\$329	+12.5%	\$380	\$306	+23.9%
Sold Price / Orig LP	99.2%	99.7%	-0.6%	105.1%	98.7%	+6.5%
Days on Market	16	22	-30.4%	19	26	-26.0%

Median	This Month			Year-to-Date		
	Sep 2021	Sep 2020	Change	2021	2020	Change
List Price	\$593,988	\$434,000	+36.9%	\$545,000	\$449,900	+21.1%
List Price/SqFt	\$348	\$311	+12.1%	\$350	\$300	+16.7%
Sold Price	\$585,000	\$431,750	+35.5%	\$562,900	\$450,000	+25.1%
Sold Price/SqFt	\$343	\$312	+9.9%	\$366	\$304	+20.3%
Sold Price / Orig LP	100.0%	99.5%	+0.5%	103.0%	100.0%	+3.0%
Days on Market	10	6	+66.7%	6	7	-14.3%

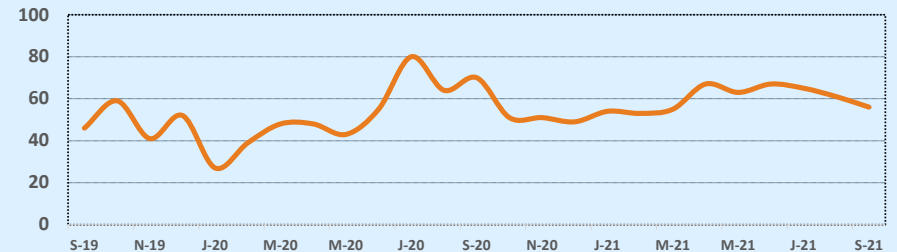
Average & Median Sales Price - Last Two Years



Months of Inventory - Last Two Years



Number of Sales - Last Two Years



Based on information from the Austin Board of REALTORS® (alternatively, from ACTRIS). Neither the Board nor ACTRIS guarantees or is in any way responsible for its accuracy. The Austin Board of REALTORS®, ACTRIS and their affiliates provide the MLS and all content therein "AS IS" and without any warranty, express or implied. Data maintained by the Board or ACTRIS may not reflect all real estate activity in the market.